

***Part Manual***

***EL JUNIOR 5.5***

***Serial Number***

***18011131-PRESENT***

***Rev. No: 01***

***ELS LIFT***

**CE**

**OUTPOWER  
THE GRAVITY.**

**TABLE OF CONTENTS**

GENERAL INFORMATION .....	2
INTRODUCTION .....	2
DESCRIPTION .....	2
HOW TO ORDER PARTS .....	3
PARTS ORDER FORM .....	3
LEGEND .....	5
EL JUNIOR 5.5 LOCATION OF SAFETY INDICATORS .....	6
List of Symbols and Hazard Legends.....	7
Description of Symbols and Hazard Legends .....	8
CHASSIS .....	9
Chassis Assembly .....	9
Steer Linkage and Pot Hole Protection Assembly.....	12
Battery and Hydraulic Pack Module .....	14
Scissors Assembly Installation .....	17
PLATFORM .....	19
Platform Assembly.....	19
SCISSOR.....	22
Scissor Assembly .....	22
Scissor Group 1 Assembly .....	25
Scissor Group 2 Assembly .....	27
Scissor Group 3 Assembly .....	29
ELECTRICAL WIRING DIAGRAM .....	31
HYDRAULIC CIRCUIT DIAGRAM .....	33

# GENERAL INFORMATION

## INTRODUCTION

This manual introduces the detailed information about machine spare parts. Every person who maintains, inspects, tests or repairs the machine must be qualified and authorized to do.

You should contact ELS Lift when you come across a situation other than described in this part manual.

Contact Us: [info@elslift.com](mailto:info@elslift.com)

[aftersales@elslift.com](mailto:aftersales@elslift.com)

## DESCRIPTION

**Machine Designation:** Machines are identified by the manufacture, according to some technical specifications of the machine.

**Description of Part Table:** Every figure has a table which is described of part's quantity, item, number, description.

**Part Manual Layout:** Manual is designed under section titles of machine. Chassis, platform, scissors are examples of some titles of machine.

**Non-Servised Parts:** In some cases, it is necessary to Show the parts and assemblies that do not require non-servised parts. These parts in the part table are indicated as "no longer used" or "not sold seperately".

**! USE THE ORIGINAL ELS SPARE PARTS FOR YOUR SAFETY !**

## HOW TO ORDER PARTS

When ordering replacement parts, please have the following machine information.

- ✓ Machine model number
- ✓ Machine serial number
- ✓ ELS part number
- ✓ Description of part
- ✓ Quantity of part
- ✓ Purchase order number
- ✓ Vat number
- ✓ Address for order to ship
- ✓ Desired method of shipment

Use the Part Order Form on the next page and mail or call your order to our After Sales Department.

### PARTS ORDER FORM

<b>Machine Model Number</b>	
<b>Machine Serial Number</b>	
<b>ELS Part Number</b>	
<b>Description of Part</b>	
<b>Quantity of Part</b>	
<b>Purchase Order Number</b>	
<b>Vat Number</b>	
<b>Address for Order to Ship</b>	
<b>Desired Method of Shipment</b>	

**Turkey**

**Els Lift Makine Sanayi Ticaret A.Ş**

Organize Sanayi Bölgesi Lacivert Cadde No:11  
16140 Nilüfer/Bursa / TÜRKİYE

[info@elslift.com](mailto:info@elslift.com)

[aftersales@elslift.com](mailto:aftersales@elslift.com)

Tel: [+90 542 464 82 50](tel:+905424648250)

**France**

**Metaloc**

11-17 Rue Constantin Pecqueur  
95150 Taverny, FRANCE

[www.metaloc.fr](http://www.metaloc.fr)

[contact@metaloc.fr](mailto:contact@metaloc.fr)

Tel: [01 30 40 20 99](tel:0130402099)

**Germany**

**Kunze GmbH**

Hermann-Oberth-Straße 3

D - 83052 Bruckmühl

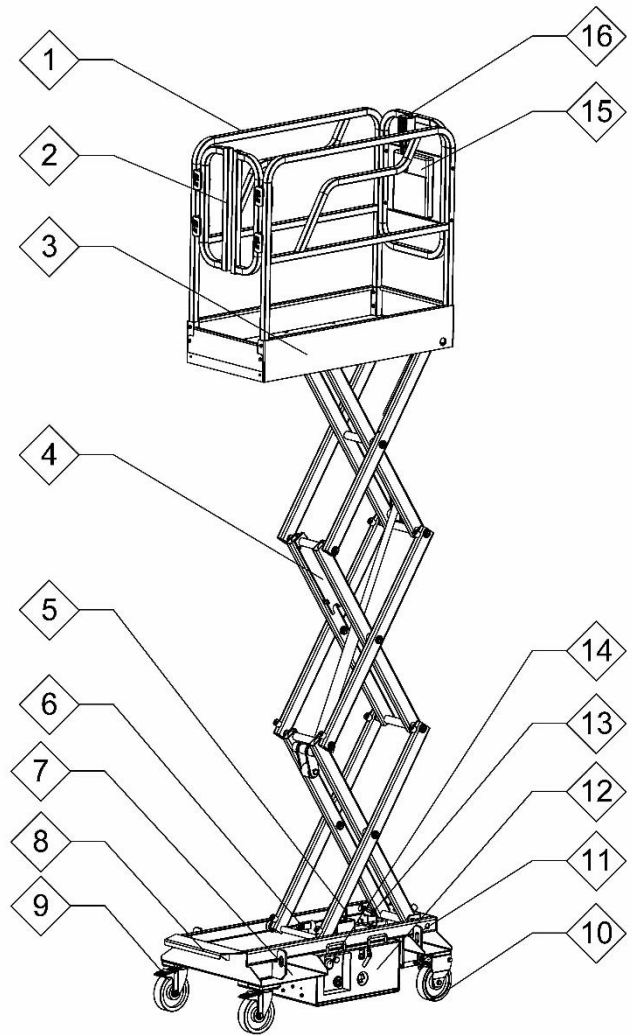
[www.kunze-buehnen.com](http://www.kunze-buehnen.com)

[info@kunze-buehnen.com](mailto:info@kunze-buehnen.com)

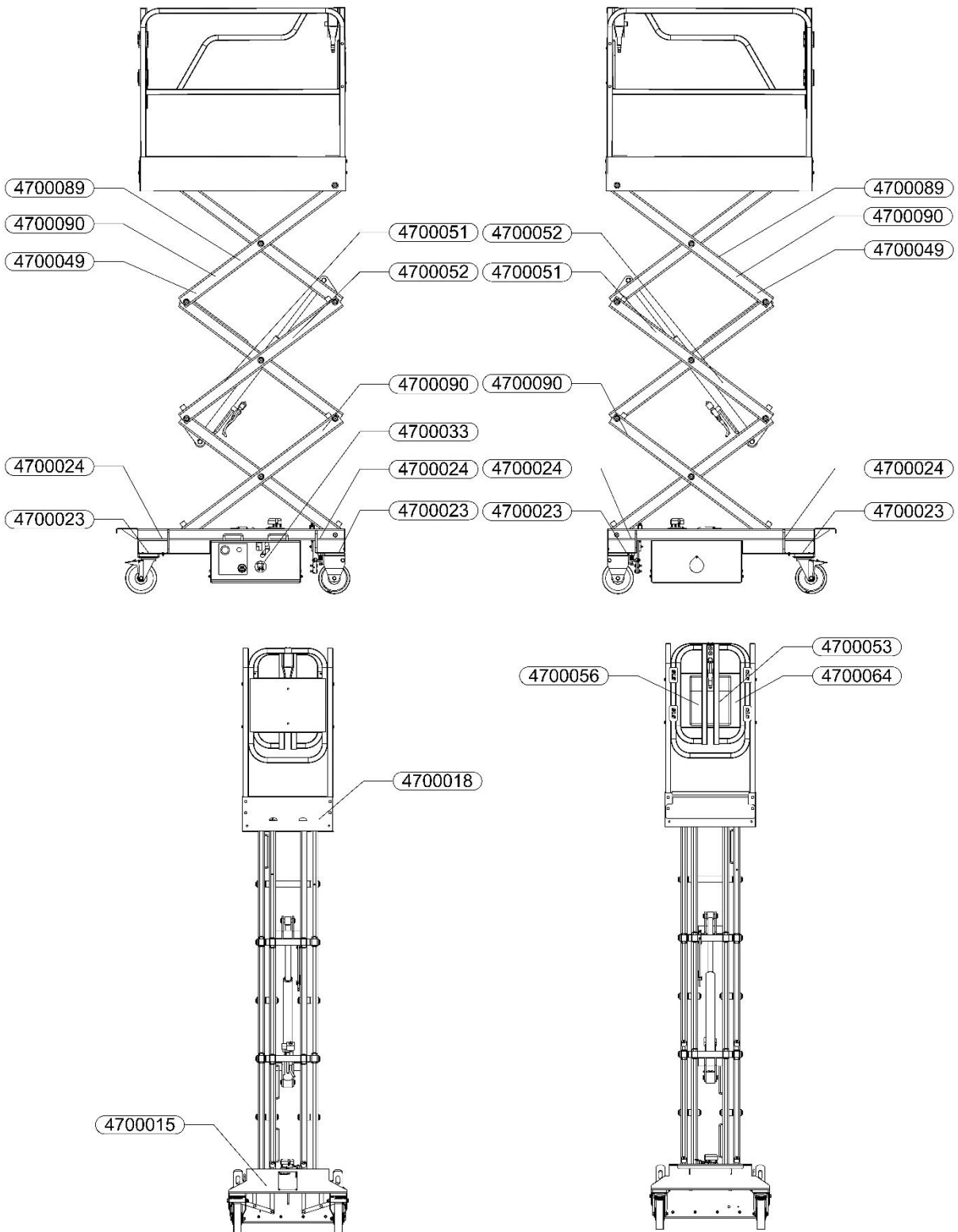
Tel: [+49 \(0\)8062/72611-0](tel:+4908062726110)

### LEGEND

- 1. Platform Guide Rails
- 2. Platform Entry Gate
- 3. Platform
- 4. Maintenance Rod
- 5. Tilt Sensor
- 6. Top Limit Switch
- 7. Forklift Pocket
- 8. Platform Access Ladder
- 9. Steer Tires
- 10. Castor Wheels
- 11. Transport and Securing Bolt
- 12. Batteries
- 13. Bottom Limit Switch
- 14. Platform Emergency Stop Button
- 15. Guide Storage Container
- 16. Platform Control Panel



### EL JUNIOR 5.5 LOCATION OF SAFETY INDICATORS

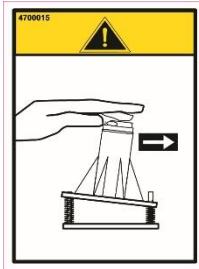


## List of Symbols and Hazard Legends

- 4700015 → Tilt Sensor Test
- 4700018 → Place of Manufacture
- 4700023 → Forklift Pockets
- 4700024 → Attachment and Lifting Point
- 4700033 → Battery Charge Plug
- 4700049 → Maintenance Rod
- 4700051 → Keep
- 4700052 → Clear
- 4700053 → Read the Operating Manual
- 4700056 → Guide Inspection
- 4700064 → No Smoking
- 4700089 → Warnings For Use
- 4700090 → Hand Crush Hazard



Description of Symbols and Hazard Legends



4700015



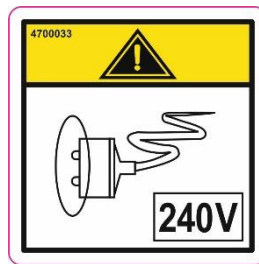
4700018



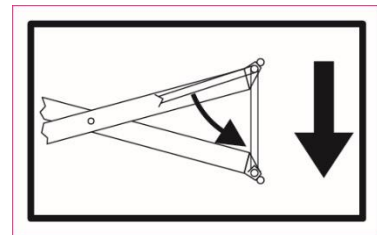
4700023



4700024



4700033



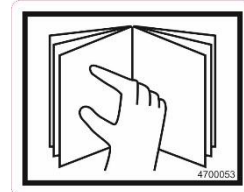
4700049



4700051



4700052



4700053

If Safety Manual, Operator's Manual or Responsibilities Manual are missing, contact local ELS distributor or ELS Industries.

4700056



4700064

Crushing Hazard Death or serious injury can result from contact with moving scissor arms.	Engage safety arm before performing maintenance or repair.	See service manual.

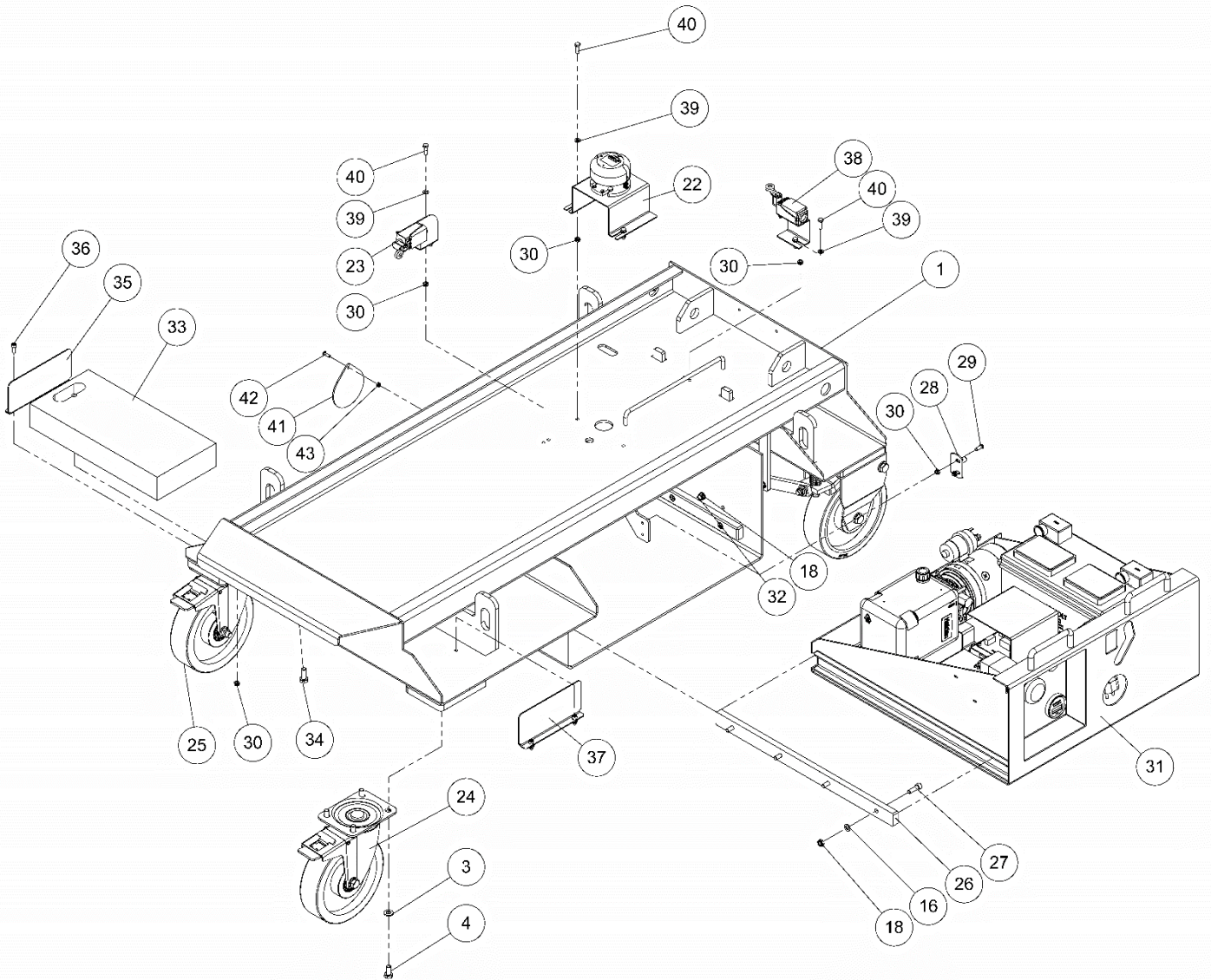
4700089



4700090

# CHASSIS

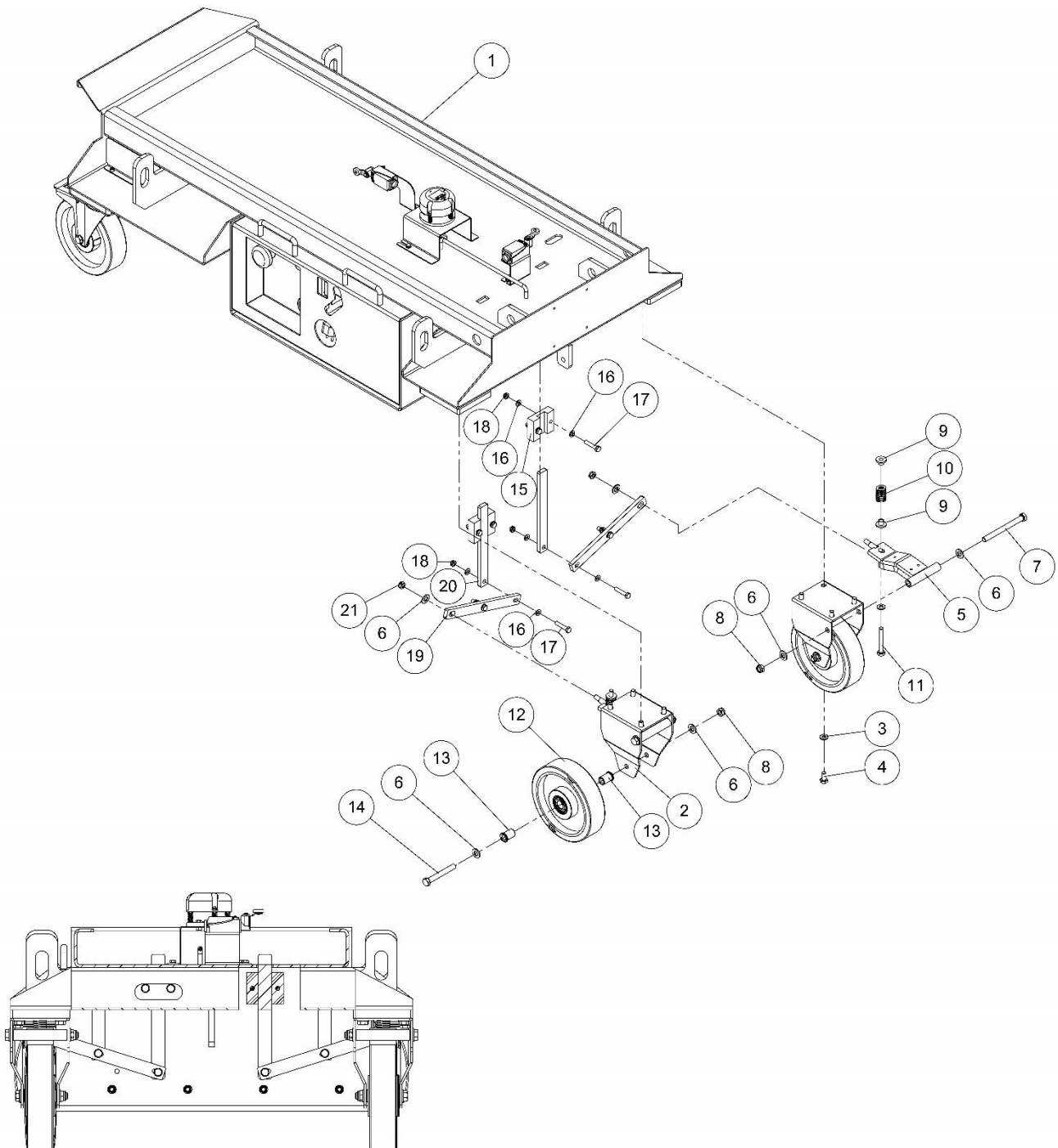
## Chassis Assembly



Item	Qty.	Description	Part No.
1	1	Chassis weldment assembly	10110100AA
3	18	M10 Washer DIN 125	S01010000AA
4	16	M10x20 Hex head cap screw DIN 518	S20010008AA
16	26	M8 Washer DIN 125	S01008000AA
18	18	M8 Prevailing torque nut ISO 10511	S07008000AA
22	1	Tilt sensor linkage plate	10111000AA
23	1	Limit switch	10110900AA
24	1	Wheel linkage assembly	M00200002AA
25	1	Wheel assembly	M00200002BA
26	2	Glide track	10110006AA
27	8	M8x25 Socket head cap screw DIN 912	S21008009AA
28	1	Latch	M01000003AA
29	2	M6x16 Hexagon socket button head screw ISO 7380	S26006006AA
30	12	M6 Prevailing torque nut ISO 10511	S07006000AA
31	1	Pack module	10110400AA
32	2	M8x20 Hex head cap screw DIN 518	S20008008AA
33	1	Weight	19991001AA
34	2	M10x25 Hex head cap screw DIN 518	S20010009AA
35	1	Weight cover	10110007AA
36	4	M6x16 Socket head cap screw DIN 912	S21006006AA
37	1	Weight cover	10110008AA
38	1	Limit switch	10110800AA
39	6	M6 Washer DIN 125	S01006000AA
40	6	M6x20 Hex head cap screw DIN 518	S20006008AA

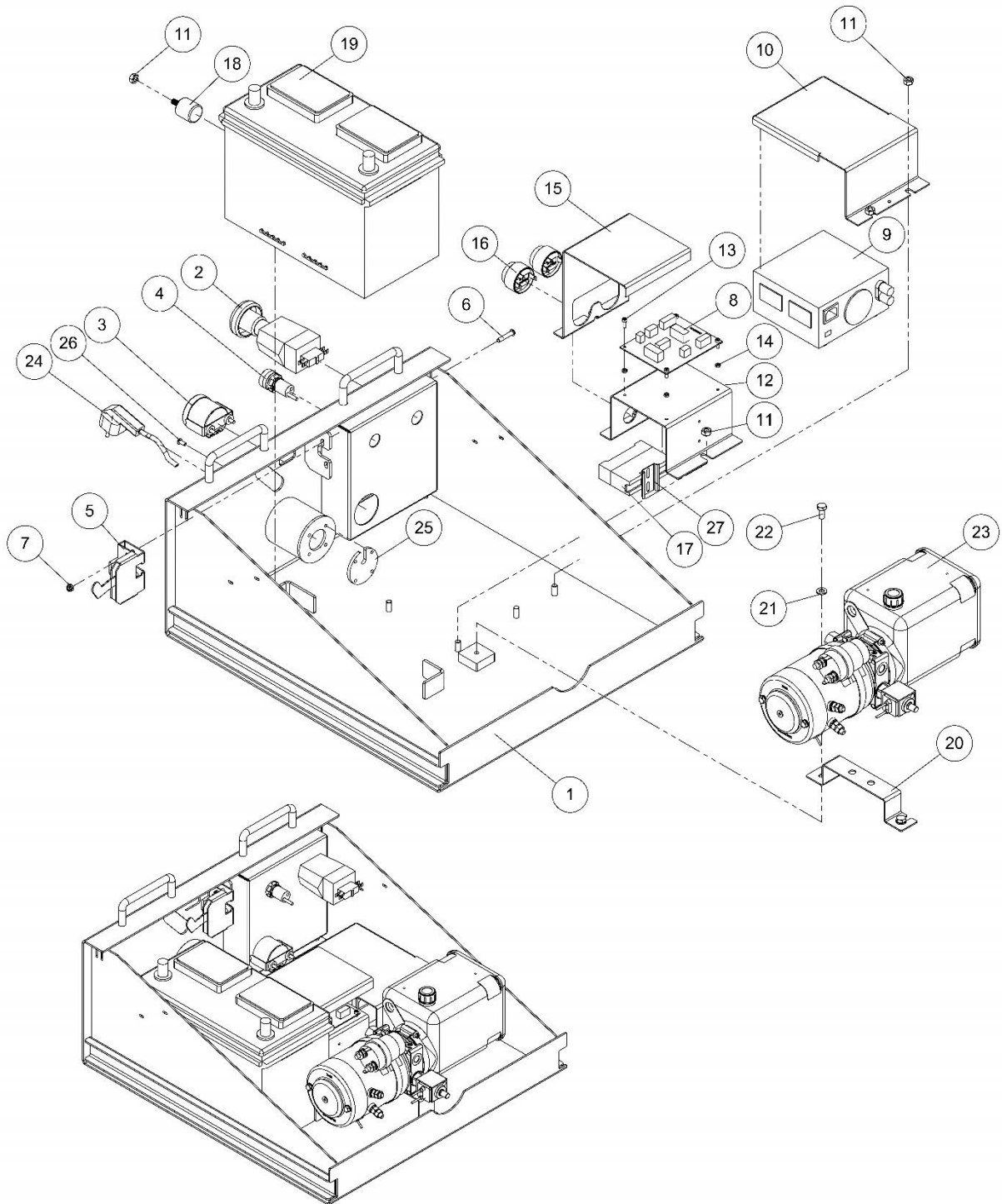
41	1	Emergency lowering cable cover	10110009AA
42	1	M5x16 Hexagon socket button head screw ISO 7380	S26005006AA
43	1	M5 Prevailing torque nut ISO 10511	S07005000AA

### Steer Linkage and Pot Hole Protection Assembly



Item	Qty.	Description	Part No.
1	1	Chassis weldment assembly	10110100AA
2	2	Wheel linkage plate	10110001AA
3	18	M10 Washer DIN 125	S01010000AA
4	16	M10x20 Hex head cap screw DIN 518	S20010008AA
5	2	Parking break parts assembly group	10110200AA
6	10	M12 Washer DIN 125	S01012000AA
7	2	M12x130 Hex head cap screw DIN 518	S20012027AA
8	4	M12 Prevailing torque nut ISO 10511	S07012000AA
9	4	Parking break spring fixing parts	10110002AA
10	2	Ø13,3x36mm green spring	M00400004AA
11	2	M10x70 Hex head cap screw DIN 518	S20010018AA
12	2	Wheel assembly	M00200001AA
13	4	Centering bushing	M01400003AA
14	2	M12x90 Hex head cap screw DIN 518	S20012022AA
15	2	Parking break sheet bar linkage plate	10110003AA
16	26	M8 Washer DIN 125	S01008000AA
17	8	M8x40 Hex head cap screw DIN 518	S20008012AA
18	18	M8 Prevailing torque nut ISO 10511	S07008000AA
19	2	Parking break sheet bar	10110004AA
20	2	Parking break driving sheet bar	10110005AA
21	2	M10 Prevailing torque nut ISO 10511	S07010000AA

### Battery and Hydraulic Pack Module

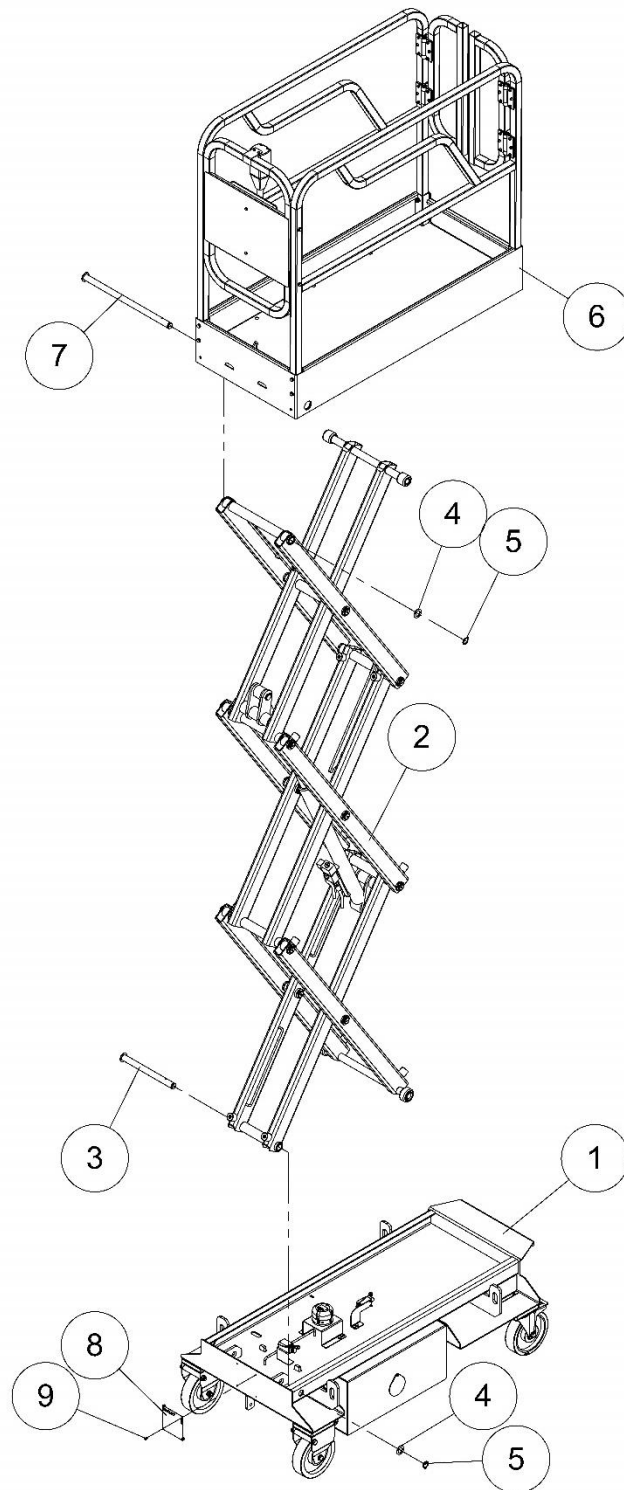


Item	Qty.	Description	Part No.
1	1	Battery and hydraulic pack weldment	10110000AA
2	1	Main Switch	E00400001AA
3	1	Battery charger indicator	E04600002AA
4	1	Indicator	E00900002AA
5	1	Lock	M01000002AA
6	2	M6x30 Hexagon socket button head screw ISO 7380	S26006010AA
7	2	M6 Prevailing torque nut ISO 10511	S07006000AA
8	1	Electronic control unit	E04110004AA
9	1	13.5V 16A Battery charger	E00310100AA
10	1	Battery charger protection plate	10110000AA
11	5	M8 Hex nut DIN 934 ISO 4029	S04008000AA
12	1	Buzzer linkage plate	10110000AA
13	4	M4x12 Socket head cap screw DIN 912	S21004004AA
14	8	M4 Hex nut DIN 934 ISO 4029	S04004000AA
15	1	Electronic control unit protection plate	10110000AA
16	2	Buzzer	E01600001AA
17	1	Timer	E01700002AA
18	1	Mounting	M01400004AA
19	1	12V 105A Battery	E00213002AA
20	1	Hydraulic power pack linkage plate	10110000AA
21	2	M8 Washer DIN 125	S01008000AA
22	2	M8x18 Hex head cap screw DIN 518	S20008007AA
23	1	Hydraulic power pack	H00100002AA
24	1	Battery charger plug	E02200001AA



25	1	Battery charger plug linkage plate	19991012AA
26	1	M5x12 Hexagon socket button head screw ISO 7380	S26008004AA
27	1	Timer bar	M02100001AA

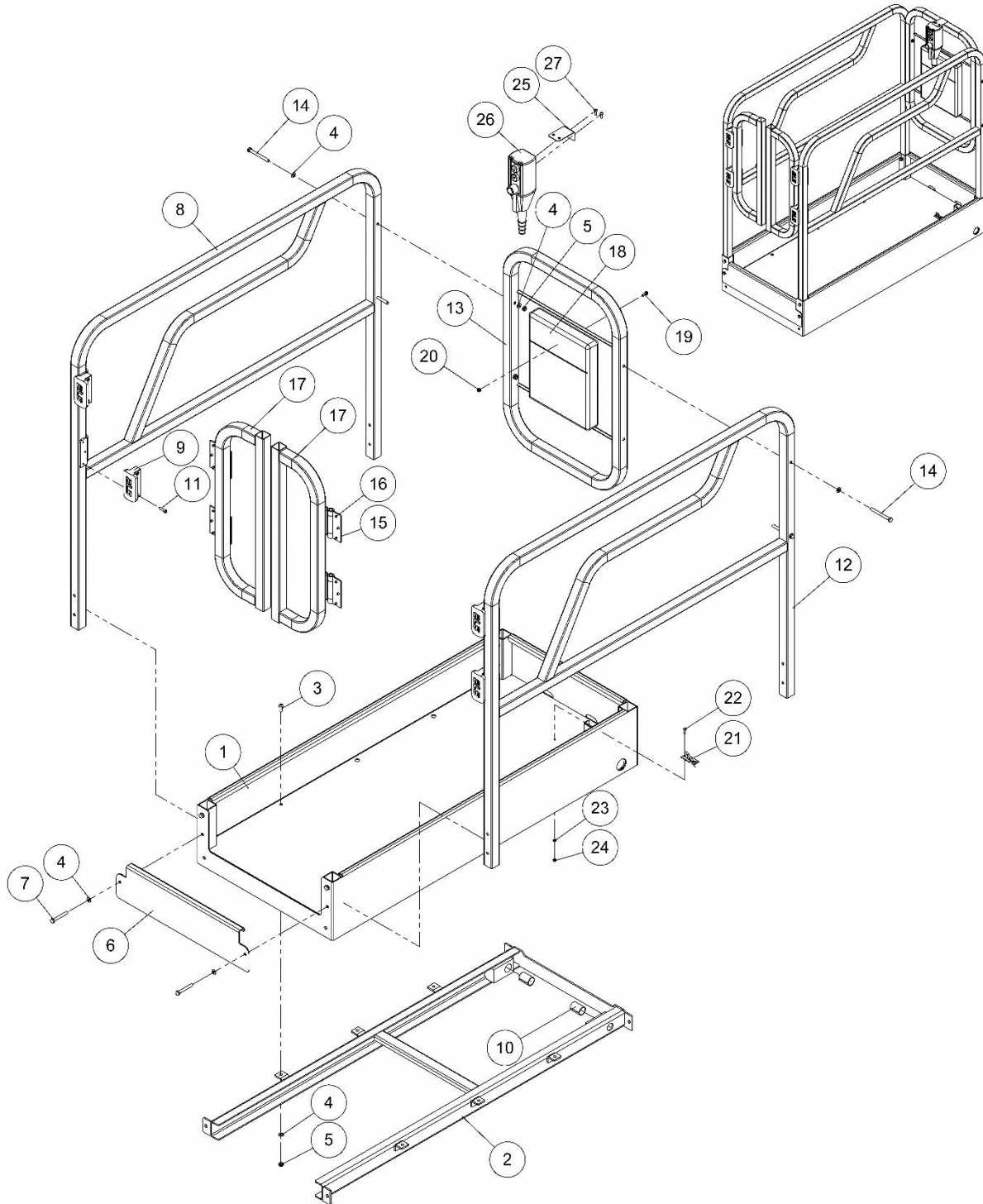
### Scissors Assembly Installation



<b>Item</b>	<b>Qty.</b>	<b>Description</b>	<b>Part No.</b>
1	1	Chassis assembly	10110000AA
2	1	Scissors assembly	10120000AA
3	1	Bottom linkage support block shaft	10120001AA
4	4	Washer	19992603AA
5	5	Ø25 Circlip DIN 471	S14048000AA
6	1	Platform assembly	10130000AA
7	1	Top linkage support block shaft	10120005AA
8	1	EL Junior 5.5 Product label	M03100001AA
9	4	Ø4x15 Rivet	S17004005AA

# PLATFORM

## Platform Assembly

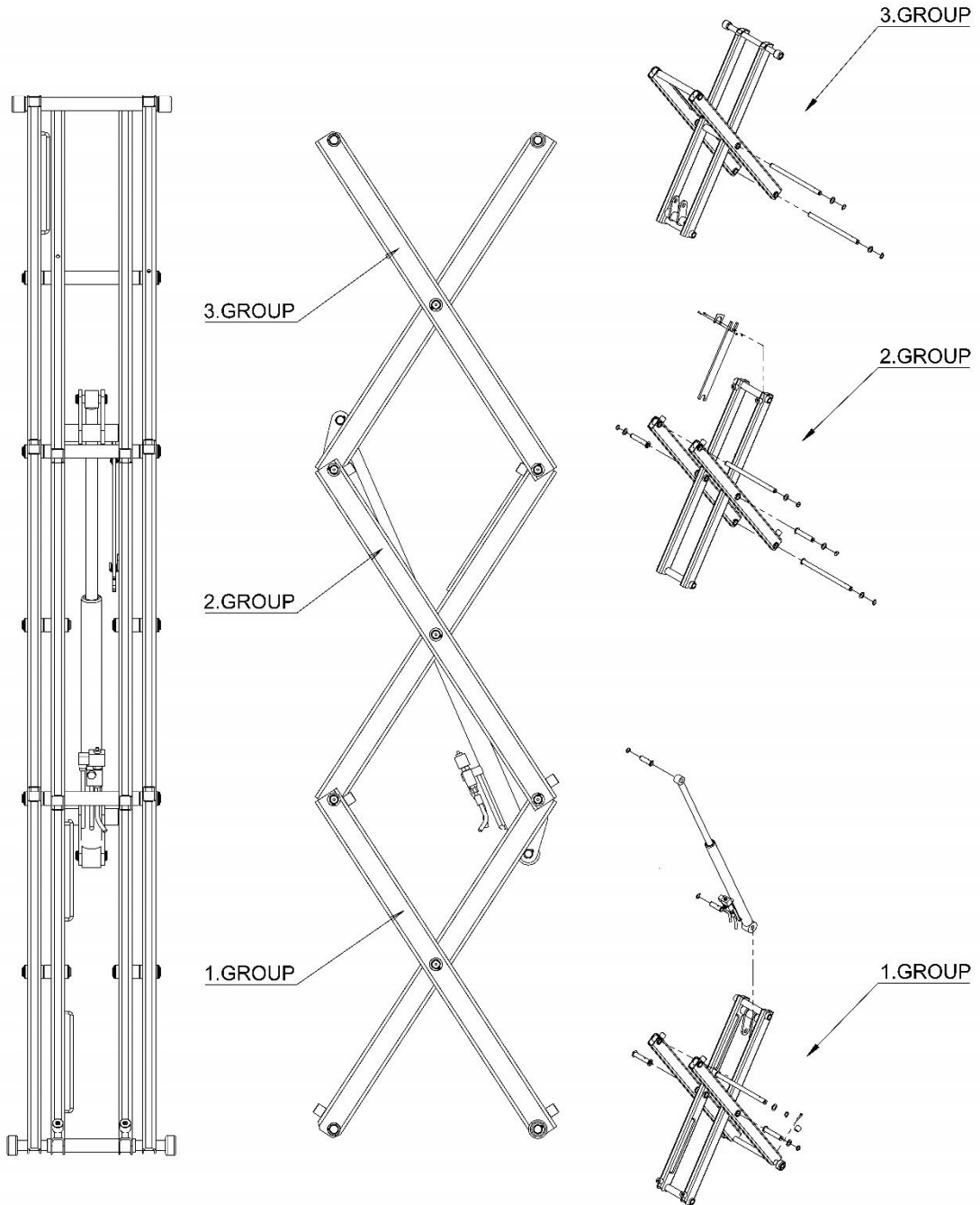


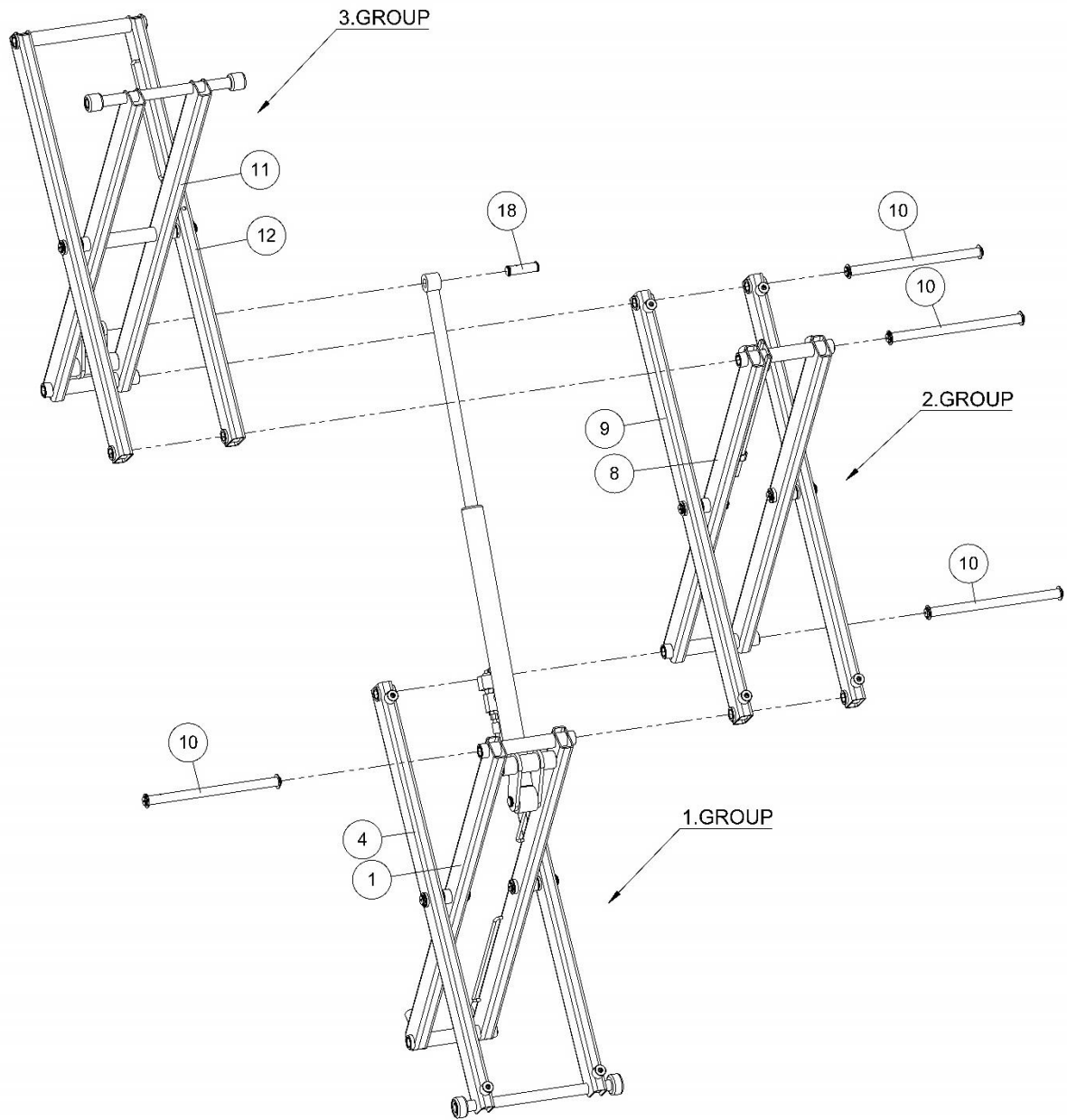
Item	Qty.	Description	Part No.
1	1	Platform assembly	10130100AA
2	1	Platform bottom support weldment	10130300AA
3	6	M8x20 Hexagon socket button head screw ISO 7380	S26008008AA
4	30	M8 Washer DIN 125	S01008000AA
5	18	M8 Prevailing torque nut ISO 10511	S07008000AA
6	1	Platform back cover	10130001AA
7	8	M8x60 Hex head cap screw DIN 518	S20008016AA
8	1	Platform left rail weldment assembly	10130400AA
9	4	ELS Delrin	M01400002AA
10	2	Ø25x40 P20 Bearing	S31048012BA
11	8	M6x20 Socket head cap screw DIN 912	S21006008AA
12	1	Platform right rail weldment assembly	10130500AA
13	1	Platform front rail weldment assembly	10130600AA
14	4	M8x80 Hex head cap screw DIN 518	S20008020AA
15	4	Salon door hinge	M01100001AA
16	24	M6x8 Socket head cap screw DIN 912	S21006002AA
17	2	Salon door weldment assembly	101304700AA
18	1	Manual box	M01300001AA
19	2	M6x15 Hex head cap screw DIN 518	S20006005AA
20	2	M6 Hex flange nut DIN 6923	S38006000AA
21	1	Lanyard attachment point	M01000004AA
22	2	M5x16 Hexagon socket button head screw ISO 7380	S26005006AA
23	2	M5 Washer DIN 125	S01005000AA
24	2	M5 Prevailing torque nut ISO 10511	S07005000AA

25	1	Platform control panel linkage plate	10130002AA
26	1	Platform kontrol panel	E04120004AA
27	2	M6x16 Hexagon socket button head screw ISO 7380	S26006006AA

# SCISSOR

## Scissor Assembly

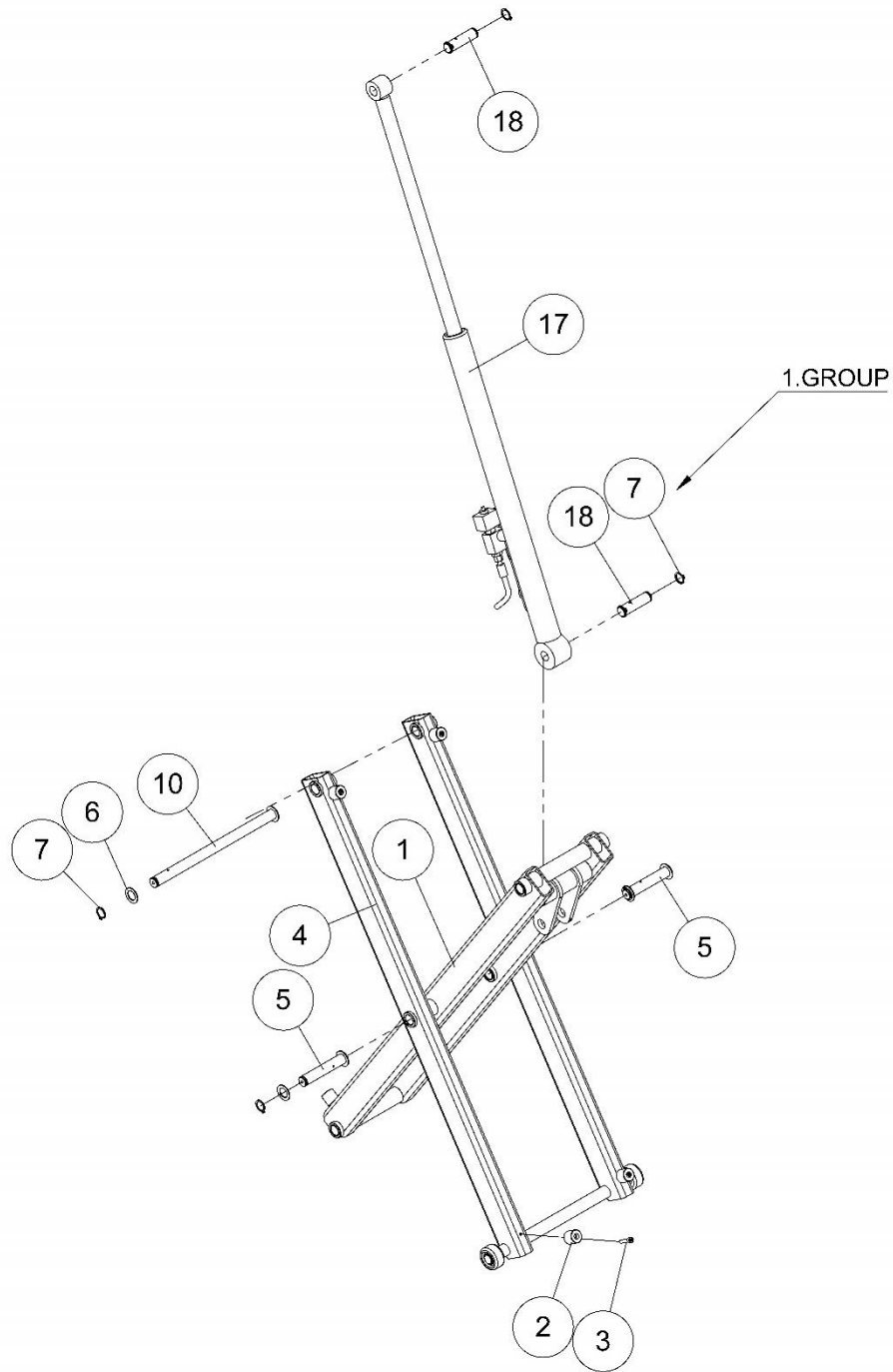






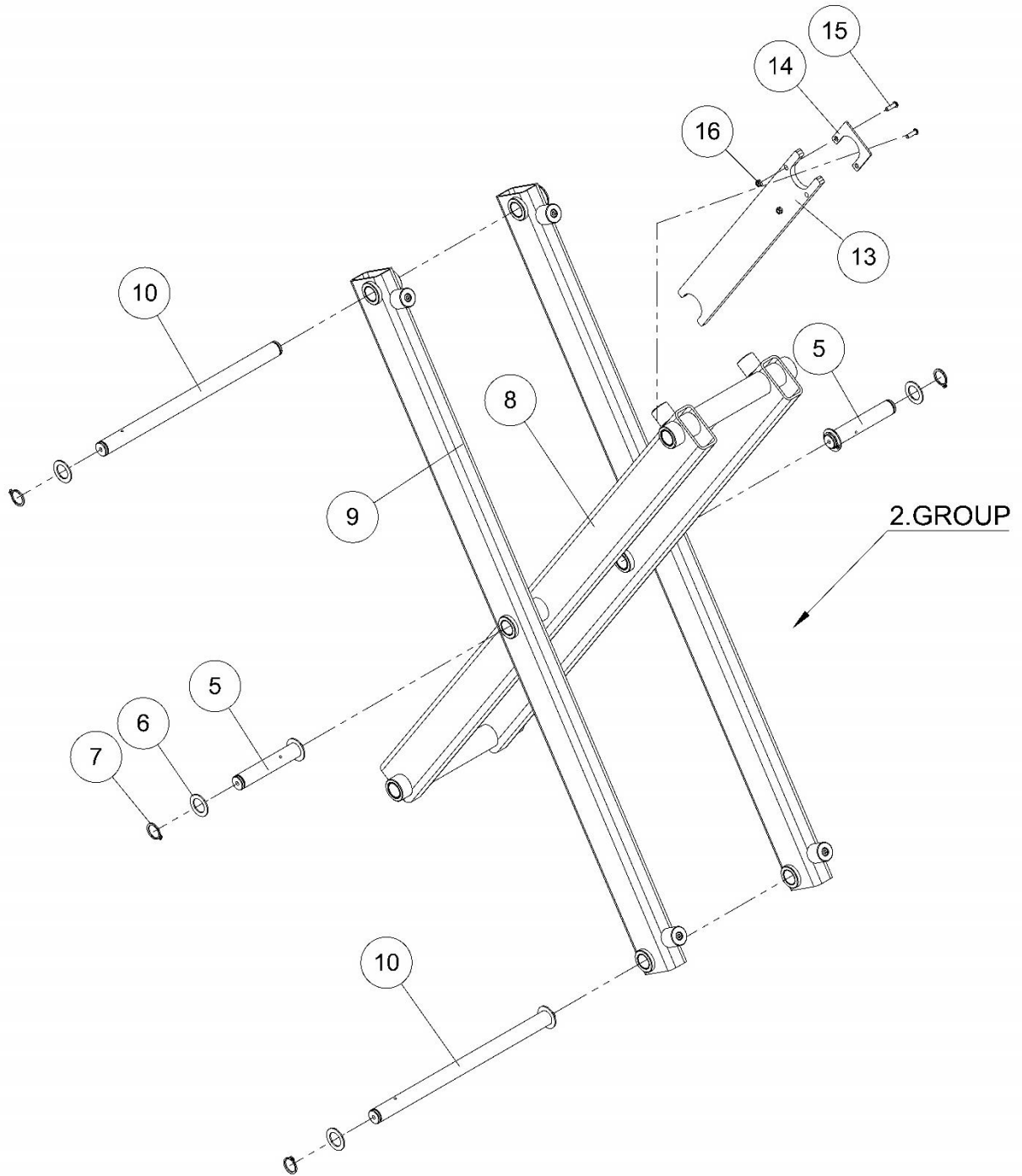
<b>Item</b>	<b>Qty.</b>	<b>Description</b>	<b>Part No.</b>
1	1	1. Inner arm assembly	10120100AA
4	1	1. Outer arm assembly	10120300AA
8	1	2. Inner arm assembly	10120500AA
9	2	2. Outer arm assembly	10120700AA
10	5	Scissors linkage shaft	10120004AA
11	1	3. Inner arm assembly	10120900AA
12	1	3. Outer arm assembly	10121100AA
18	2	Cylinder, linkage shaft	10120008AA

### Scissor Group 1 Assembly



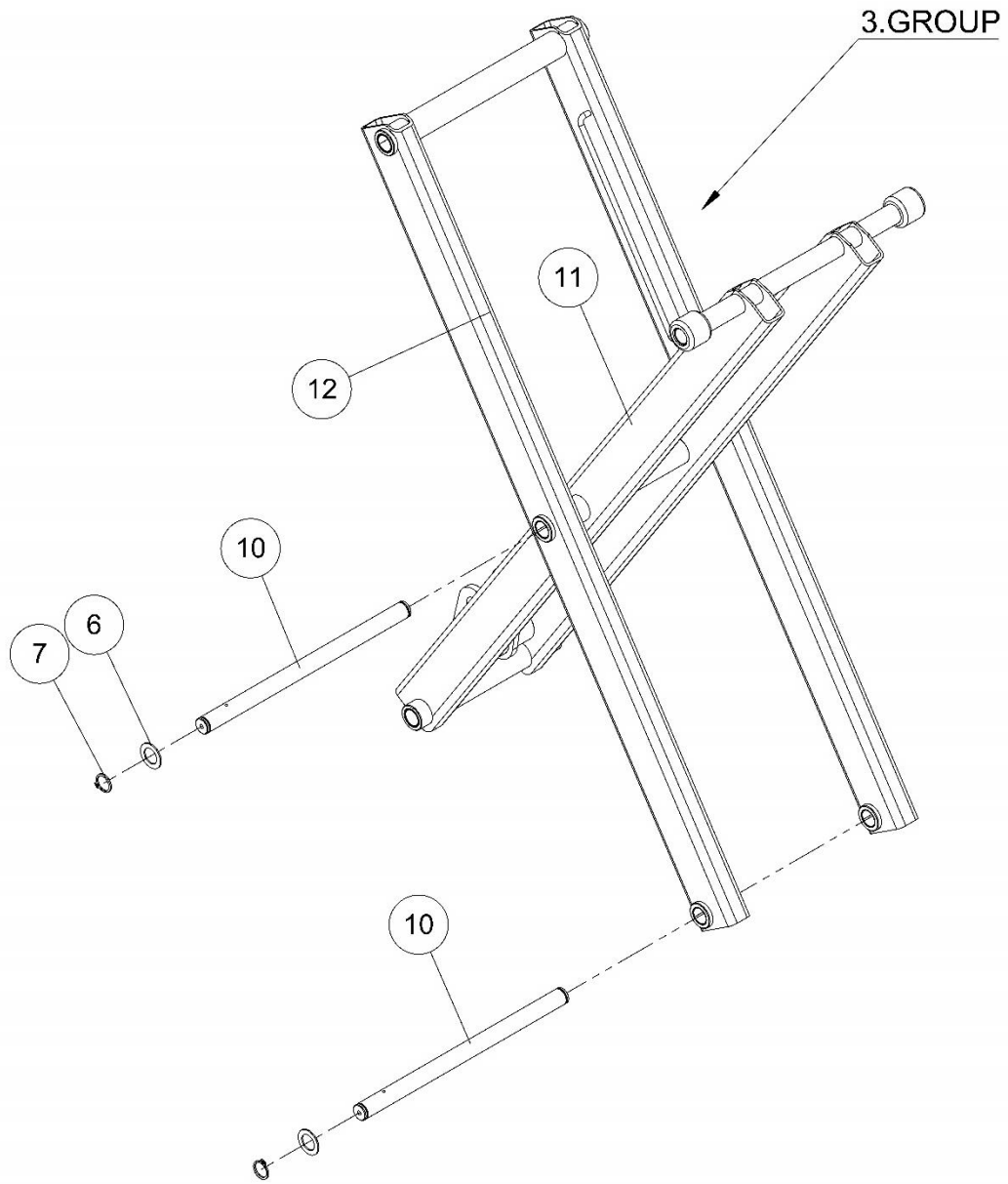
<b>Item</b>	<b>Qty.</b>	<b>Description</b>	<b>Part No.</b>
1	1	1. Inner arm assembly	10120100AA
2	12	Cap	10120002AA
3	12	M8x35 Socket head cap screw DIN 912	S21008011AA
4	1	1. Outer arm assembly	10120300AA
5	4	Shaft	10120003AA
6	18	Washer	19992603AA
7	22	Ø25 Circlip DIN 471	S14048000AA
10	5	Scissors linkage shaft	10120004AA
17	1	Lift cylinder	H00510001AA
18	2	Cylinder, linkage shaft	10120008AA

### Scissor Group 2 Assembly



<b>Item</b>	<b>Qty.</b>	<b>Description</b>	<b>Part No.</b>
5	4	Shaft	10120003AA
6	18	Washer	19992603AA
7	22	Ø25 Circlip DIN 471	S14048000AA
8	1	2. Inner arm assembly	10120500AA
9	2	2. Outer arm assembly	10120700AA
10	5	Scissors linkage shaft	10120004AA
13	1	Maintenance rod	10120006AA
14	1	Maintenance rod linkage plate	10120007AA
15	2	M6x30 Hexagon socket button head screw ISO 7380	S26006008AA
16	2	M6 Prevailing torque nut ISO 10511	S07006000AA

**Scisor Group 3 Assembly**

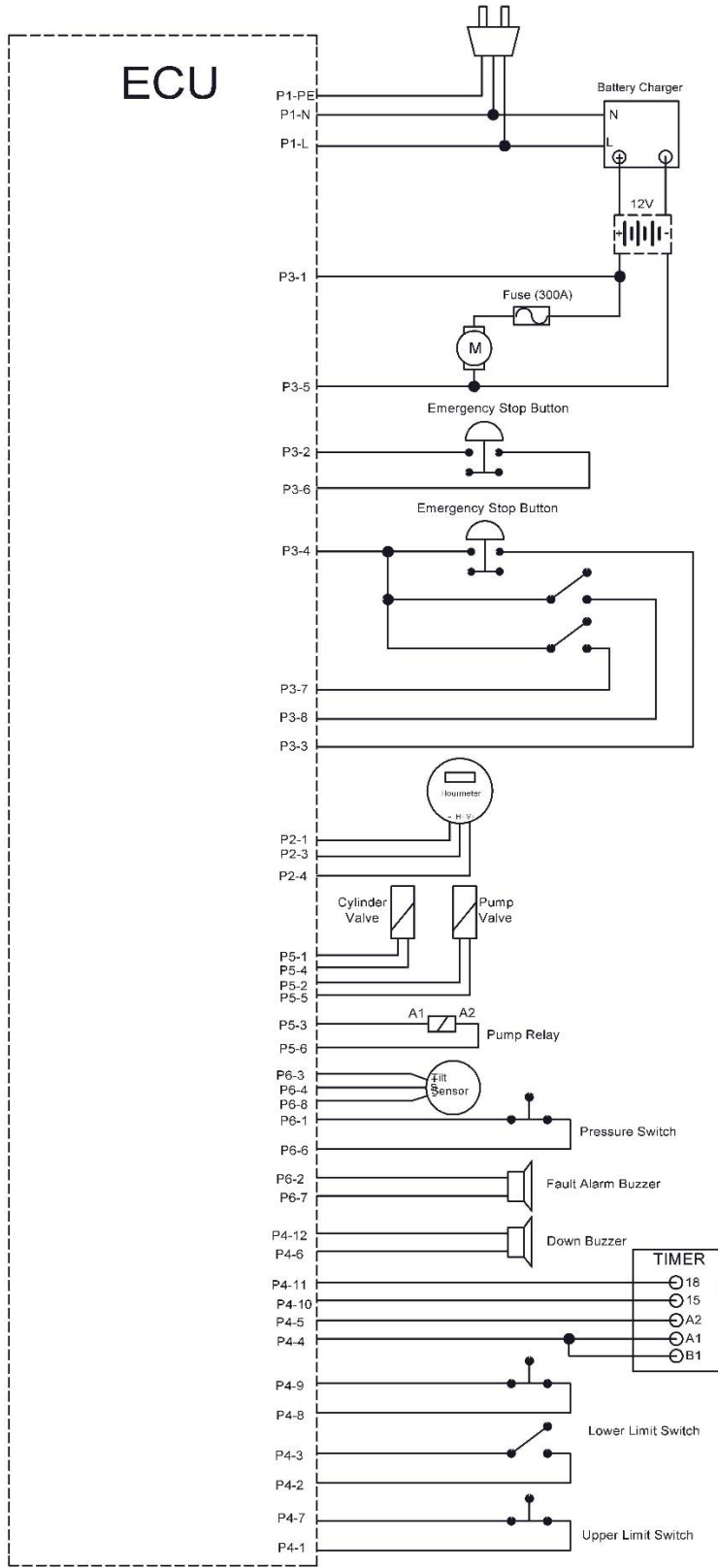


<b>Item</b>	<b>Qty.</b>	<b>Description</b>	<b>Part No.</b>
6	18	Washer	19992603AA
7	22	Ø25 Circlip DIN 471	S14048000AA
10	5	Scissors linkage shaft	10120004AA
11	1	3. Inner arm assembly	10120900AA
12	1	3. Outer arm assembly	10121100AA

**ELECTRICAL WIRING DIAGRAM**



Bu doküman ELS MAKİNE'ye aittir. Her hakkı mahfuzdur.  
İzinsiz kullanılamaz, kopya edilemez, üçüncü şahıslara devredilemez.  
DİKKAT: Üzerinden ölçü almayınız.



**ELS LIFT**

Elsisan Makine San. Tic. A.Ş.  
Organize Sanayi Bölgesi  
Lacivert Caddesi No:11  
16140 Nilüfer/Sarıyıldız/TÜRKİYE  
T: +90 224 241 30 30 F: +90 224 242 90 20  
www.elsisan.com - www.elslift.com

Makina Adı

JUNIOR 5.5

Çizen

Seval KAYA

Onaylayan

Koray ERKEKLİ

Tarih

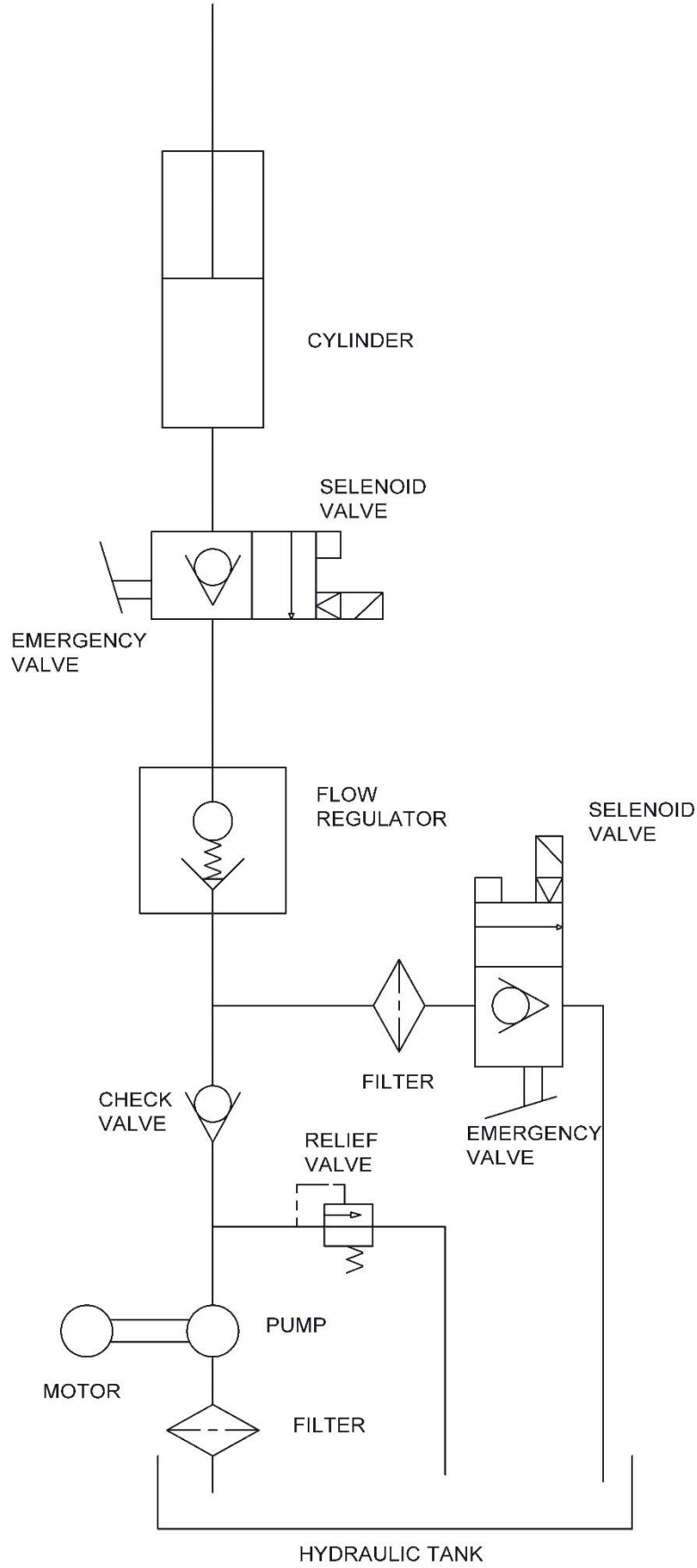
24.04.2019

Resim No.

D10110100AA

**HYDRAULIC CIRCUIT DIAGRAM**

Bu doküman ELS MAKİNE'ye aittir. Her hakkı mahfuzdur.  
İzinsiz kullanılamaz, kopya edilemez, üçüncü şahıslara devredilemez.  
DİKKAT: Üzerinden ölçü almayınız.



**ELS LIFT**

Elsisan Makine San. Tic. A.Ş.  
Organize Sanayi Bölgesi  
Laçvert Caddesi No:11  
16140 Nilüfer/Bursa/TÜRKİYE  
T: +90 224 241 30 90 F: +90 224 242 90 20  
www.elsisan.com - www.elslift.com

Makina Adı

JUNIOR 5.5

Çizen

Seval KAYA

Onaylayan

Koray ERKEKLİ

Tarih

25.04.2019

Resim No.

D10120100AA